

CD

# Accessories

## Capacitor Discharge

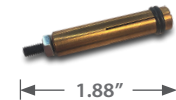
| Tapered Base Chuck | SIZE          | Part Number | Size                           | Part Number    |
|--------------------|---------------|-------------|--------------------------------|----------------|
|                    | 4-40 (12 SWG) | 4181101     | 3mm                            | 2181181        |
|                    | 6-32 (10 SWG) | 4181351     | 4mm                            | 2181571        |
|                    | 8-32          | 4181601     | 5mm                            | 2181971        |
|                    | #10           | 4181871     | 6mm                            | 2182361        |
|                    | 1/4           | 4182501     | 8mm                            | 2183121        |
|                    | 5/16          | 4183121     | 10mm                           | 2183931        |
|                    | 3/8           | 4183751     | <b>Starter Kit (All Sizes)</b> | <b>TBSK001</b> |



| B-Collet | SIZE          | Part Number | Size                           | Part Number    |
|----------|---------------|-------------|--------------------------------|----------------|
|          | 4-40 (12 SWG) | 4181103     | 3mm                            | 2181183        |
|          | 6-32 (10 SWG) | 4181353     | 4mm                            | 2181573        |
|          | 8-32          | 4181603     | 5mm                            | 2181973        |
|          | #10           | 4181873     | 6mm                            | 2182363        |
|          | 1/4           | 4182503     | 8mm                            | 2183123        |
|          | 5/16          | 4183123     | 10mm                           | 2183933        |
|          | 3/8           | 4183753     | <b>Starter Kit (All Sizes)</b> | <b>BCSK001</b> |



| Euro Style Chucks | SIZE | Part Number | Size | Part Number |
|-------------------|------|-------------|------|-------------|
|                   | 4-40 | 4181103EUR  | 3mm  | 2181183EUR  |
|                   | 6-32 | 4181353EUR  | 4mm  | 2181573EUR  |
|                   | 8-32 | 4181603EUR  | 5mm  | 2181973EUR  |
|                   | #10  | 4181873EUR  | 6mm  | 2182363EUR  |
|                   | 1/4  | 4182503EUR  | 8mm  | 2183123EUR  |



| B-Collet Stop | SIZE             | Part Number |
|---------------|------------------|-------------|
|               | Universal B-Stop | 418STOP     |



| B-Collet Long (Nelson) | SIZE          | Part Number | SIZE | Part Number |
|------------------------|---------------|-------------|------|-------------|
|                        | 4-40 (12 SWG) | 4181104     | 3mm  | 2181184     |
|                        | 6-32 (10 SWG) | 4181354     | 4mm  | 2181574     |
|                        | 8-32          | 4181604     | 5mm  | 2181974     |
|                        | #10           | 44181874    | 6mm  | 2182364     |
|                        | 1/4           | 4182504     |      |             |
|                        | 5/16          | 4183124     |      |             |
|                        | 3/8           | 4183754     |      |             |



| Collet Insert | SIZE          | Part Number       |
|---------------|---------------|-------------------|
|               | 6-32 (10 SWG) |                   |
|               | 8-32          |                   |
|               | #10           | Specify Stud Dia. |
|               | 1/4           | And Length        |
|               | 5/16          |                   |
|               | 3/8           |                   |



| B Collet Protector | SIZE   | Part Number |
|--------------------|--------|-------------|
|                    | 10 GA. | 4180020     |



| Ground Spade Terminal Chuck | SIZE     | Part Number |
|-----------------------------|----------|-------------|
|                             | One Size | 4016718     |

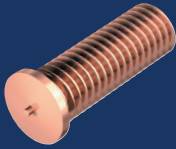


| Spark Shield | SIZE       | Part Number |
|--------------|------------|-------------|
|              | 1.16" Dia. | 4170203     |



WELDING STUDS | FASTENERS | STUD WELDING SYSTEMS





CD

# Accessories Capacitor Discharge

| Magnetic Cup Head Chuck            | SIZE                                   | Part Number        |
|------------------------------------|--|--------------------|
| Complete Assembly                  |  | 4180019            |
| TSK 310 Template Adapter Footpiece | SIZE                                   | Part Number        |
|                                    | 30 mm Dia.<br>Faceplate                | 4019792<br>4112156 |
| TSK 310 Tri-Pod Leg Footpiece      | SIZE                                   | Part Number        |
|                                    | 30 mm Ring w/3-Legs<br>Single Leg Only | 4019938<br>4019946 |
| TSK 310 Twin Leg Footpiece         | SIZE                                   | Part Number        |
|                                    | 5/16 X 7" Leg<br>Med. Footpiece        | 4170301<br>4170001 |
| Tapered Base Chuck Adapter         | SIZE                                   | Part Number        |
|                                    | External                               | 4170101            |
| B-Collet Adapter                   | SIZE                                   | Part Number        |
|                                    | Internal                               | 4170103            |
| B-Collet Adapter                   | SIZE                                   | Part Number        |
|                                    | External                               | 4170102            |



## Quick Clamps



Quick Clamps  
Part Number: 2023333

WELDING STUDS | FASTENERS | STUD WELDING SYSTEMS

